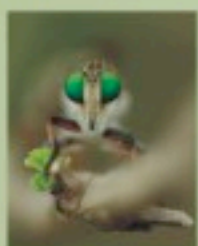




India is unique in possessing 12 biogeographical regions with high biological diversity which provides a wide range of benefits to mankind. There is a need to document, conserve and utilize these bio-resources for sustainable development.

Many factors such as habitat destruction and loss, invasion by exotic weeds and lack of awareness towards the value of biodiversity have led to a high rate of biodiversity loss. Various stakeholders such as local communities, government and the corporate sector have a vital role to play in conservation and promotion of biodiversity. The conference aims at addressing these issues by providing a platform to researchers, government agencies, NGOs, private industries, academicians and students to interact and share ideas for better promotion and utilization of bio resources to ensure persistence of biodiversity.

About Pune:



Pune (18°31' N, 73°51' E), is one of the Metropolitan cities of Western India aptly called the 'Queen of Deccan' after its elevated position atop the Deccan Plateau. It is also known as the 'Oxford of the East' and is now the upcoming 'IT-BT' capital of India. Pune harbors several important research institutes

like NCL, IUCAA, NIV, NARI, ARI, IISER, IITM, BSI, ZSI etc. It lies on the leeward side of the Western Ghats, a global biodiversity hot-spot. The city harbors hill forests and is surrounded by Dive Ghat-Katraj-Sinhagad range on the south. This has made Pune city one of the biodiversity rich cities of India.

Climate:

The climate is moderate and salubrious, owing to the altitude and the leeward location with reference to the Western Ghats. It is particularly pleasant in the month of February.

Connectivity:



It is well connected by road and rail from all the sides. It is about 160 km south-east of Mumbai, 235 km north of Kolhapur, 220 km south-west of Aurangabad and 200 km north-west of Solapur. All major flights operate from Pune and fly in from various destinations such as Bengaluru,

Delhi, Kolkata, Mumbai etc.

About Maharashtra Education Society:



Established in 1860, it is the oldest private educational institution in Pune. At present Maharashtra Education Society runs fifty five constituent units including pre-primary, primary and secondary schools, a military school for girls, a vocational training institute, colleges and management institutes.

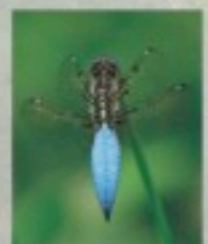
About the College:



Abasaheb Garware College is one of the premier institutions of M.E.S. and imparts education from undergraduate to doctoral research. Presently five thousand students are taking education in Arts and Science faculties.

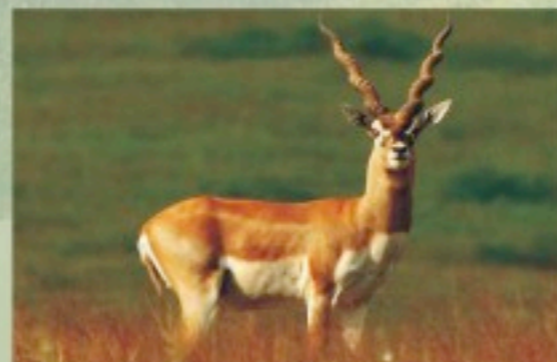
Postgraduate education is available in Biodiversity, Microbiology, Biotechnology, Analytical Chemistry, Organic Chemistry, Physics, Computer Science, Electronics, Economics, History, Hindi and Political Science.

About the Department:



The Master's Degree course in Biodiversity is the only course of its kind in Pune University, started under Innovative Programme of UGC. It bridges the gap between excellence in field and laboratory biology. Department believes in and imparts 'borderless education' to the students by the way of an 'experiential

learning' process. It has a strong research focus with grass-root linkages. The research is supported by prime agencies such as ISRO-UoP, DBT, BCUD, Ruffords Small Grants (UK), to name a few. Promotion of out of the box thinking has helped students reach higher echelons in their lives as evident by Antarctic Expedition, Darwin Scholarship, Asian Geographic Photography prize etc. Besides, students themselves have co-authored more than 15 peer-reviewed publications in National and International Journals of repute. Department admits students from a wide range of disciplines including Bachelors in Science, Forestry, Agriculture, Fisheries, Medicine and any branch of Engineering through an entrance test.



Photographs by:
Dr. Ankur Patwardhan,
Devendra Gogate,
Pankaj Koparde,
Neha Shintre

Conference:

The conference will feature invited talks by renowned speakers such as Dr. K. N. Ganeshiah, Dr. R. Umashaanker, Dr. Darshan Shankar, Dr. R. J. Ranjit Daniels; along with oral and poster presentations by the participants on the following themes.

Themes for abstract submission:

- **Biodiversity Assessment** (Genetic diversity, Habitat diversity, Species diversity- plants, animals, microbial, Unique ecosystems, Fresh water/marine ecosystems, Under-explored taxa)
- **Ecosystem Functions** (Climate change, Phenology, Plant- animal interactions, Pollination, Dispersal)
- **Bioprospecting and Utilization** (Medicinal plants, Agro-biodiversity and Livestock diversity)
- **Landscape Ecology** (RS-GIS application in Biodiversity studies, Impact assessment, Eco-restoration)
- **In-situ, Ex-situ conservation models**
- **Community Participation in Conservation** (Access-Benefit sharing, Community conservation models, Biodiversity legislation)

Special session on

"Role of Corporate in Conservation"

Guidelines for Abstract submission:

- The abstract should not exceed 150 words, should be sent as an MS WORD document in Times New Roman, font size 11 pt, line spacing 1.5, margin 1" from all sides on A4 paper.
- Paper title – Upper case, centered and bold, font size 12 pt.
- Author/s name and affiliation – Centered, Font size 11 pt. Start with presenting author first (underlined) followed by co-author/s.
- Author/s address – Centered, font size 10 pt.
- Key words – Max. 5, font size 10 pt.
- Indicate the most appropriate theme amongst those mentioned above.
- Abstracts received will be reviewed and scrutinized by the Scientific Programme Committee for Oral/Poster presentation.

Submission of abstracts by email only:
biodiversityconference2012@gmail.com

Delegates are requested to make their own arrangements of stay. Tariff for accommodation will be made available on request.